



Faculty of Biological Science and Technology
Zoology and Botanical Department
Practical Embryology

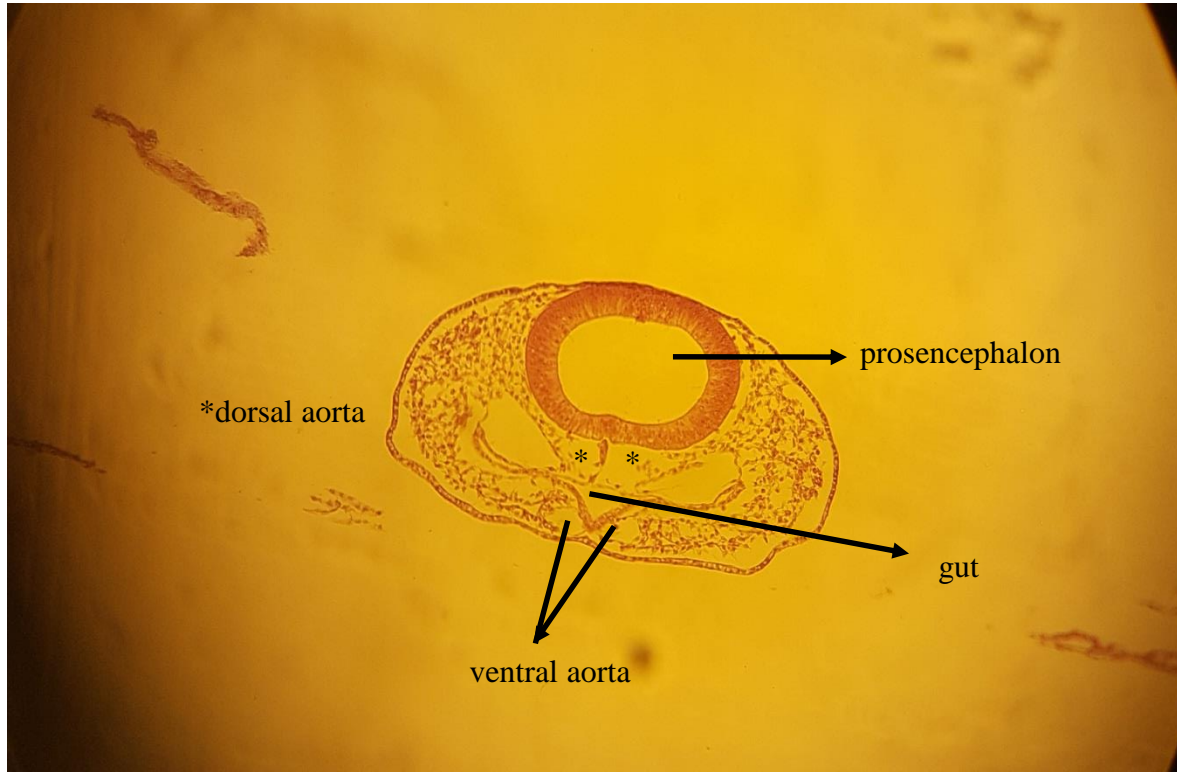
تکوین پرندگان (جنین ۳۳ ساعته جوجه)
Bird Development
(33 chick embryo)

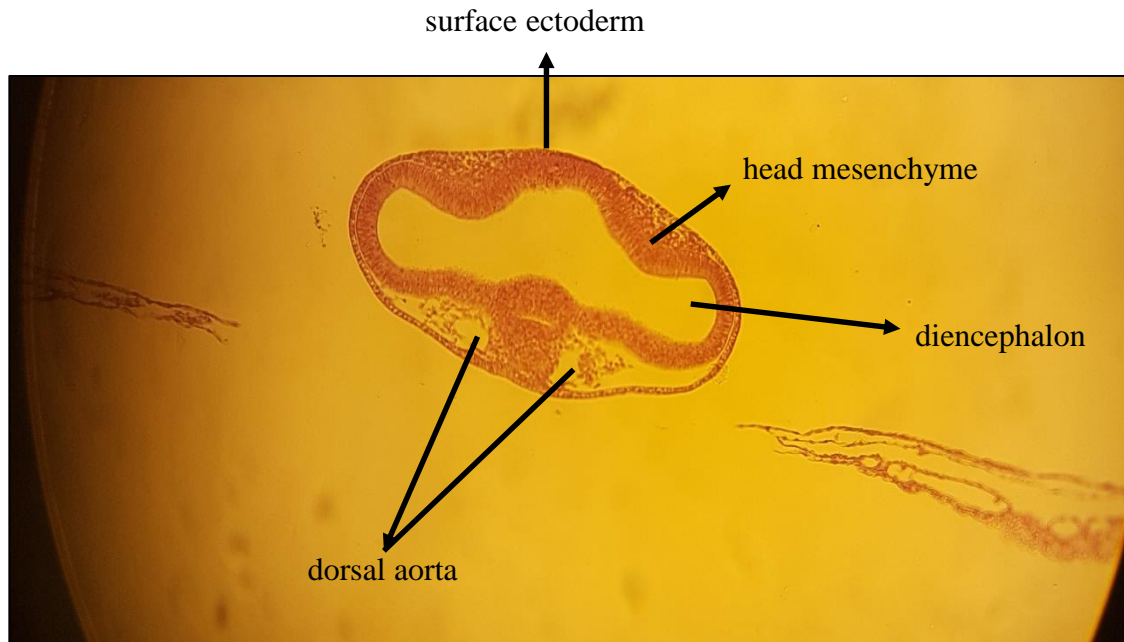
By: Shirin Kashfi
Ph.D in Animal Development
Sh.kashfi@staf.ui.ac.ir



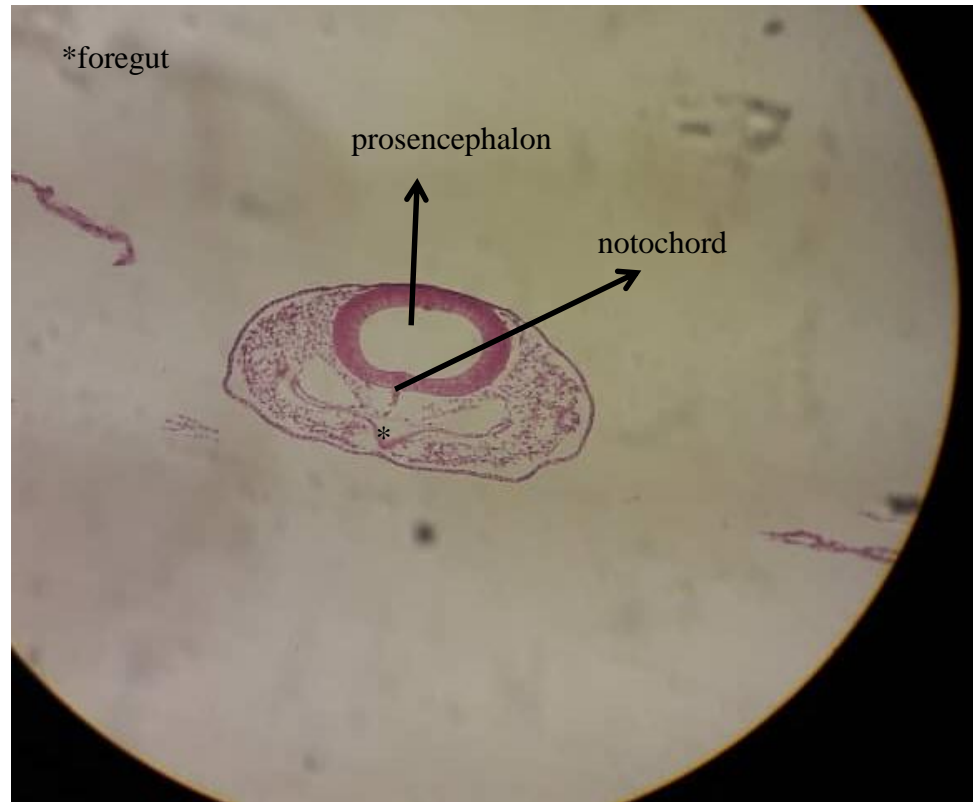
جنین کامل ۳۳ ساعته

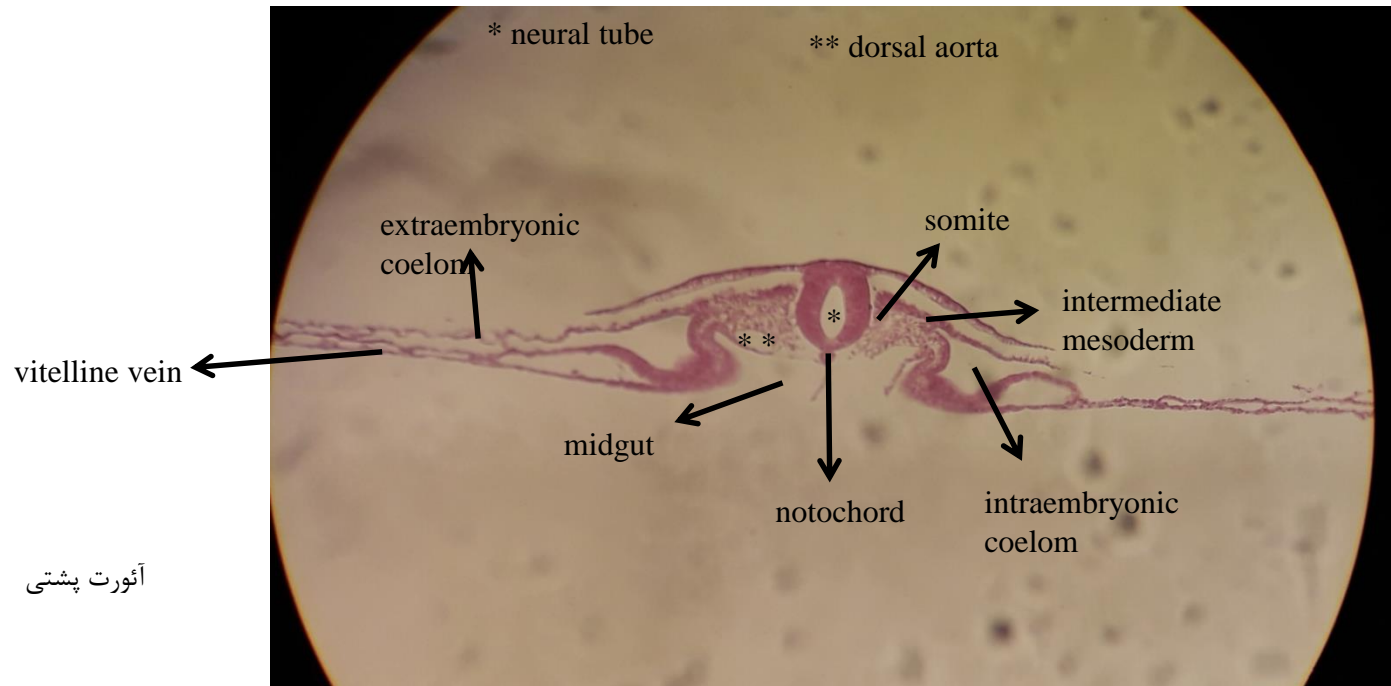


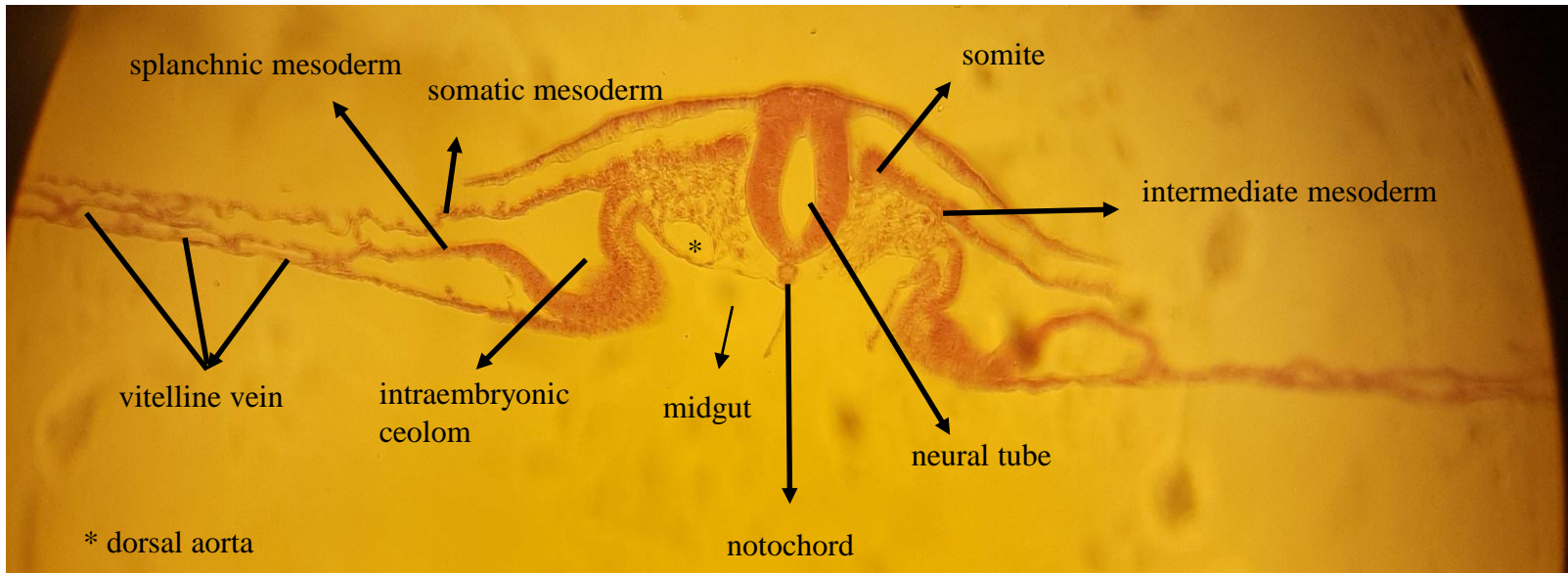


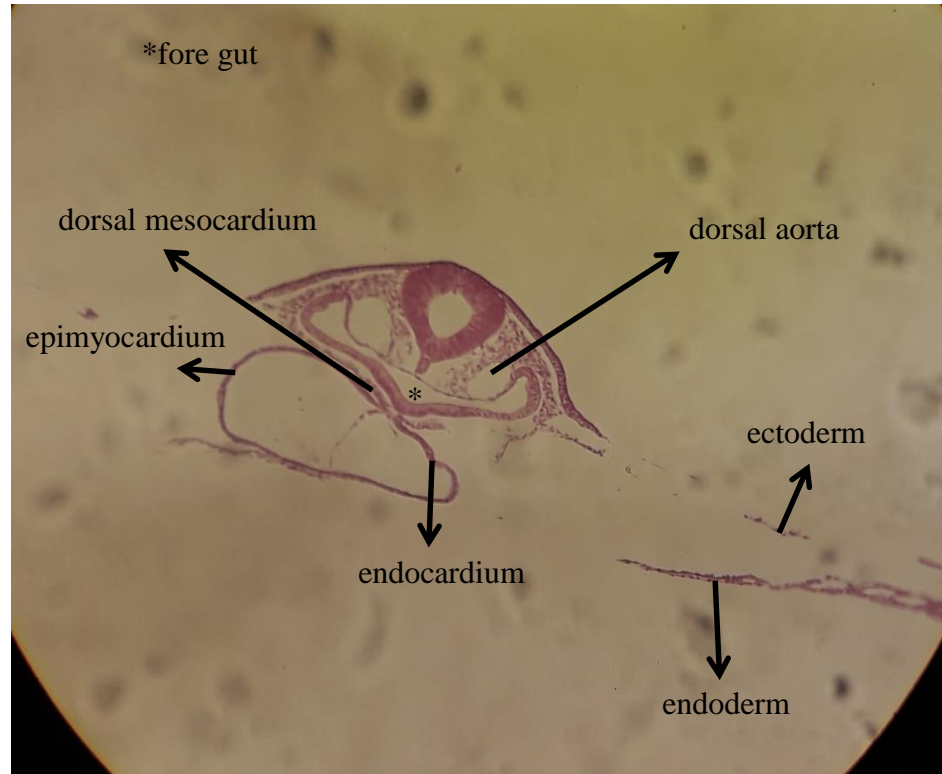


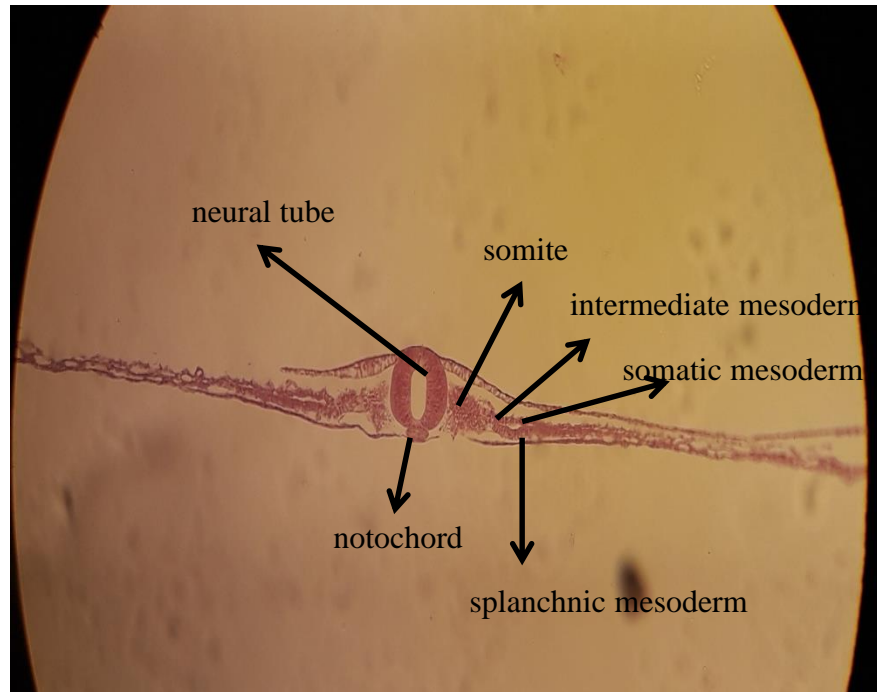


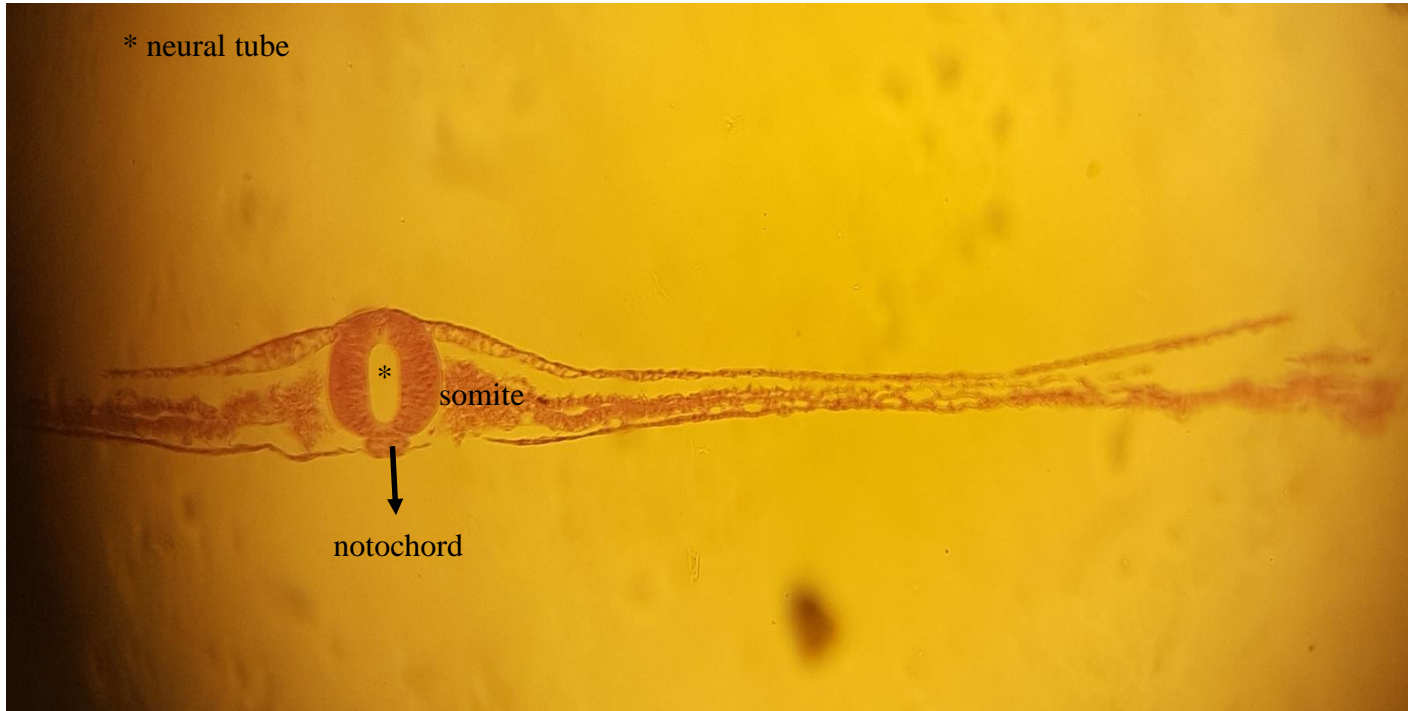


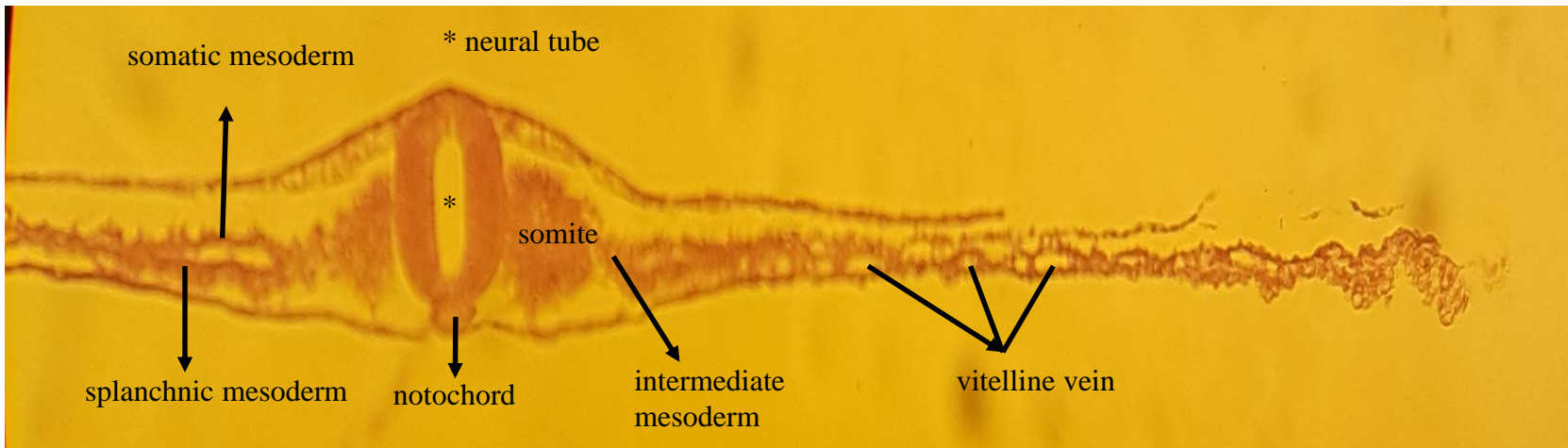


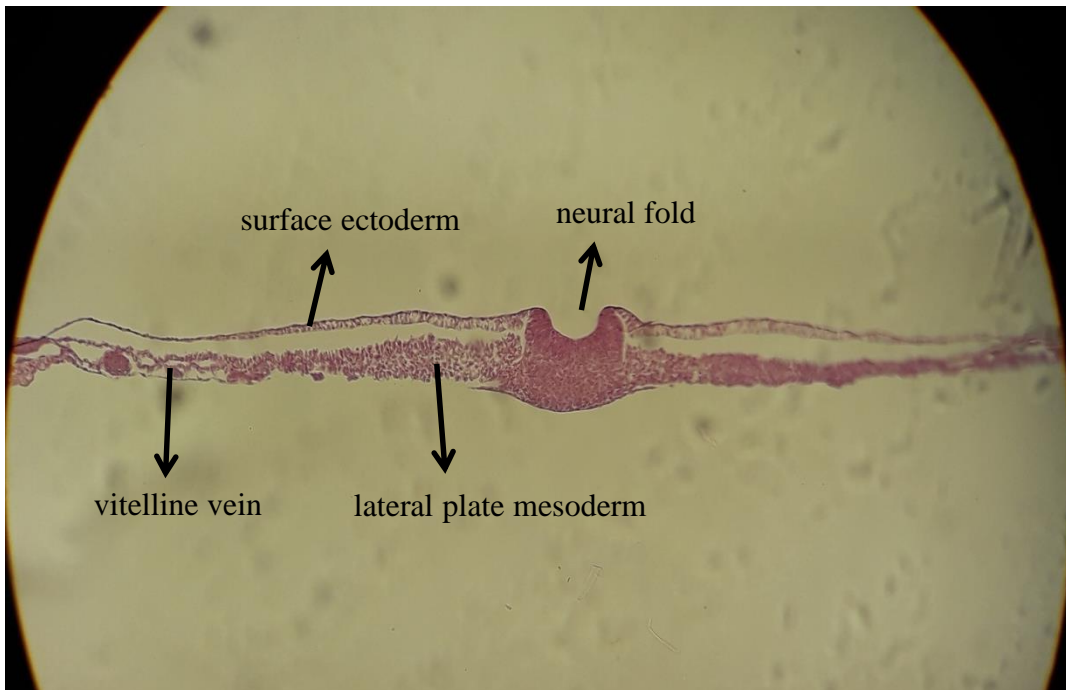


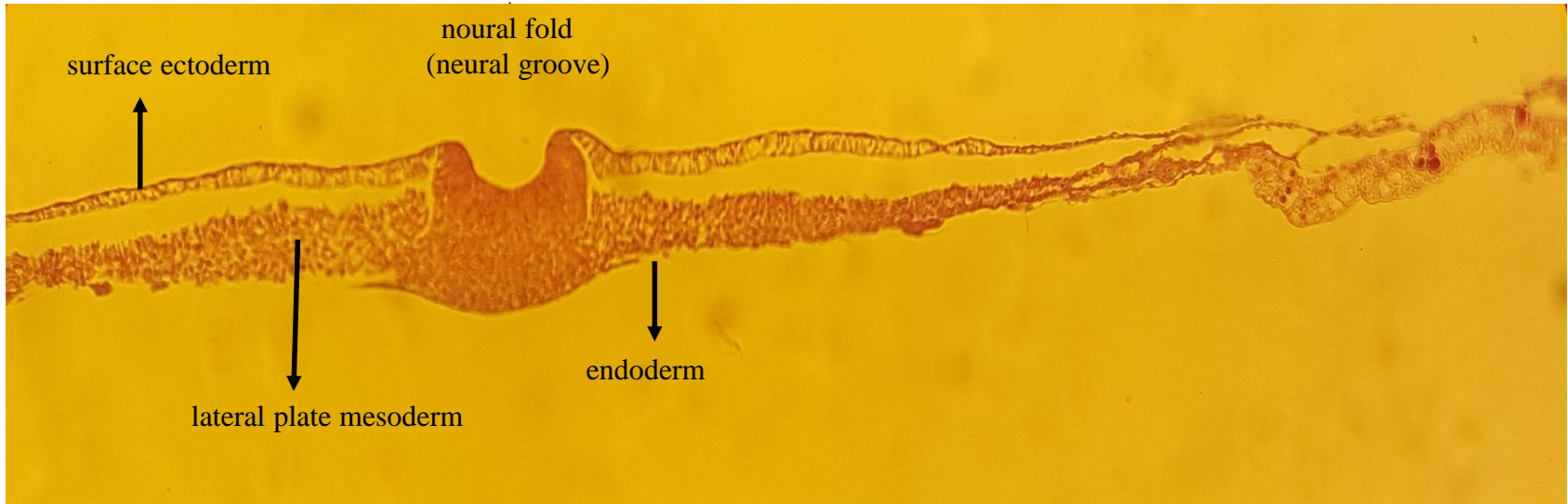


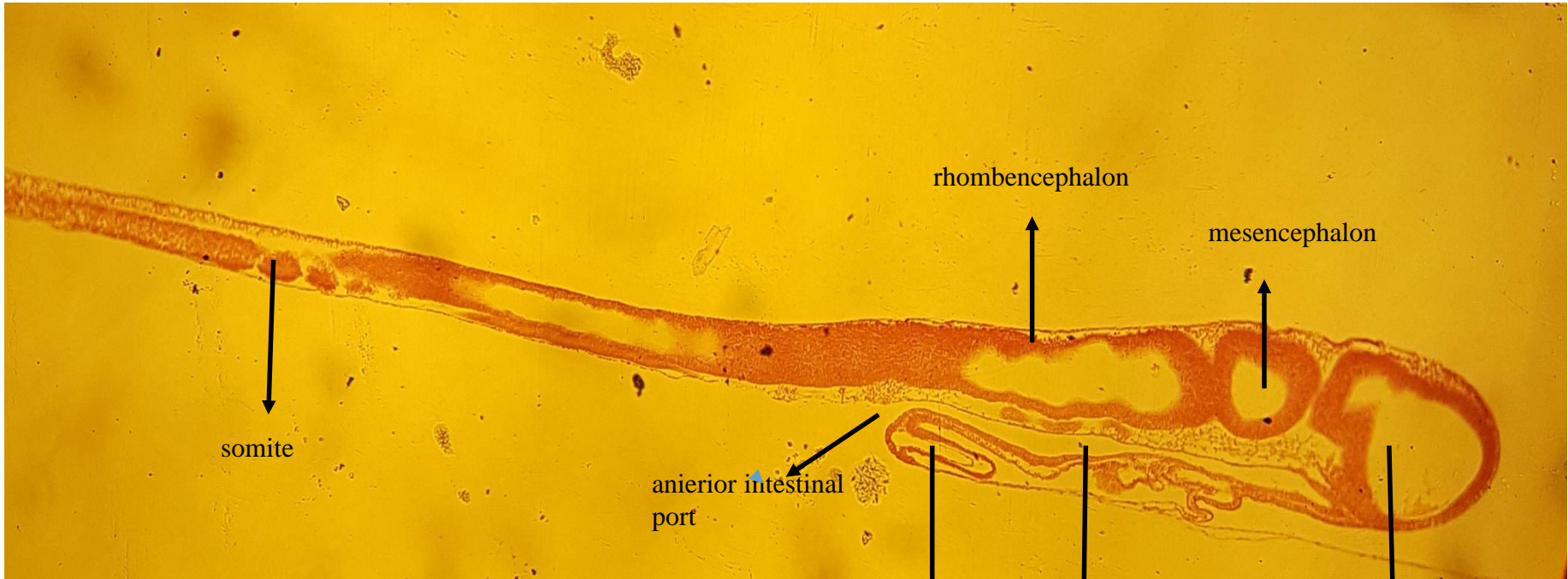












somite

anterior intestinal port

heart

foregut

rhombencephalon

mesencephalon

prosencephalon

